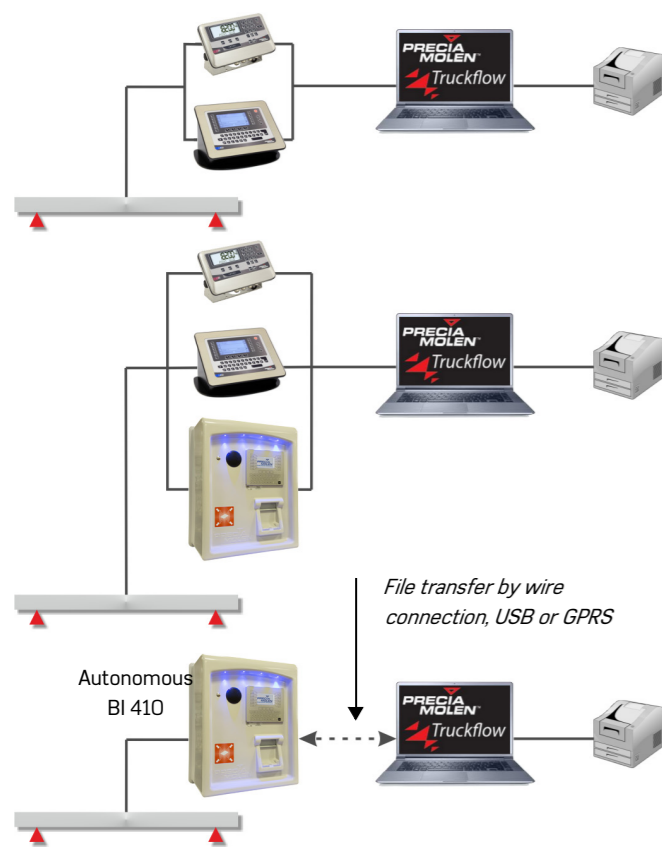
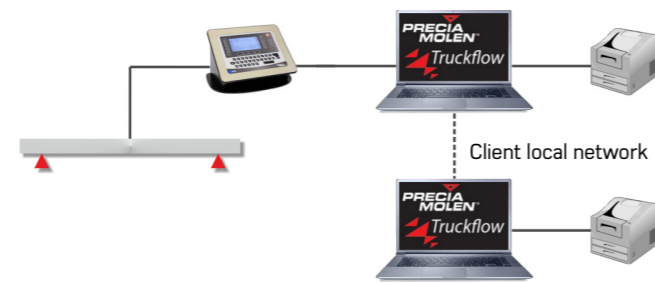


## Configurations

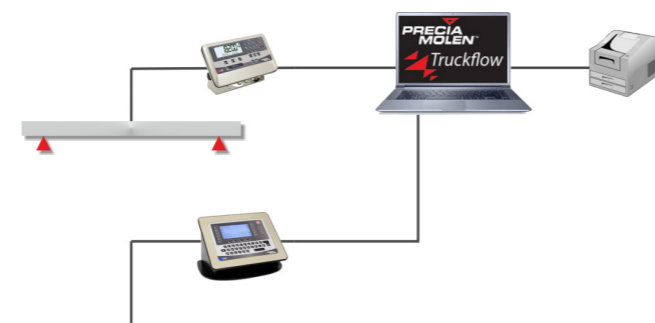
### Single-station single-bridge



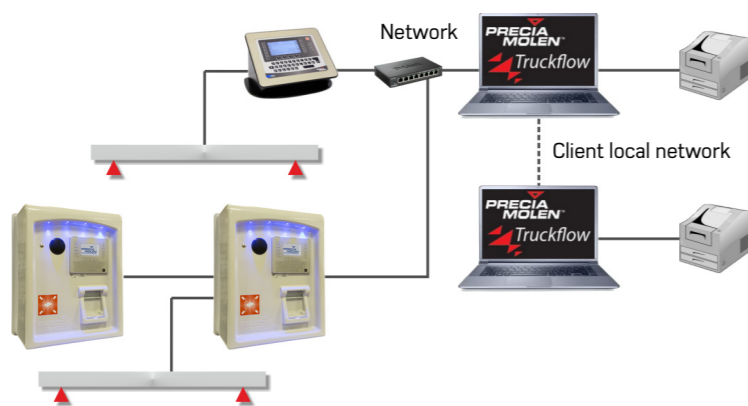
### Multi-station single-bridge



### Single-station multi-bridge



### Multi-station multi-bridge



File transfer by wire connection, USB or GPRS

Autonomous BI 410

## Technical data

### Minimal configuration required:

- Windows 7 SP1 operating system (32 or 64 bits)
- x86/64 - 2.4 Ghz processor (e.g.: Intel Core i3)
- 128 Mo graphic board
- RAM 4 Go (ideally 8 Go)
- 10 Go disk space (ideally SSD)
- 21" 1920x1080 resolution screen
- Network board

### Development under C#.NET and WPF

- SQL server database
- Edition of "List and Label" reports (Combit company)
- Windows 10 tablet compatible

### Your specialist

Non contractual illustrations. Precia-Molen reserves the right to modify at any time the characteristics of the equipment described in this brochure.

**PRECIA-MOLEN Headquarters & Factory**  
 BP 106 - 07000 Privas - France  
 Tel. 33 (0) 475 664 600  
 Fax 33 (0) 475 664 330  
 E-MAIL [webmaster@preciamolen.com](mailto:webmaster@preciamolen.com)

RCS: 386 620 165 RCS Aubenas

**PRECIA-MOLEN**  
 WORLDWIDE WEIGHING

WWW.PRECIAMOLEN.COM

# TRUCKFLOW

## Weighbridge weighing management software

**PRECIA-MOLEN**  
 WORLDWIDE WEIGHING

## Introduction

PRECIA MOLEN has developed a user-friendly and efficient weighing management software application to facilitate the daily operator's work with intuitive weigh data entries.

This application offers input/output management by a differentiation of material reception/sending.

Only relevant data are asked from the operator or directly from the driver in case of weighing terminals installed near the weigh-bridge.

The number of entries can be further reduced by using contactless badges or by automatically reading nameplates.

Managing the road traffic around the weighbridge often requires installing barriers and two-colour traffic lights. TRUCKFLOW offers electronic monitoring of this equipment, thus avoiding the use of heavy and limiting manual operating panels.

TRUCKFLOW also offers a photo making and storing function, prior to and after weighing.

All transactions are stored as database, enabling the administrator to edit daily, monthly or yearly detailed reports that can be listed in 3 hierarchy levels.

Moreover, TRUCKFLOW integrates an access right management function for each user who can customise screens according to their preferences and retrieve these settings every time they use the application.

## Use application

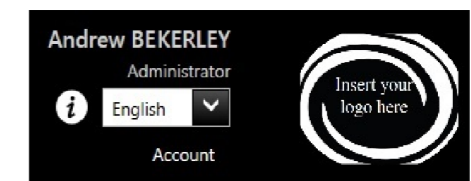
The TRUCKFLOW software application covers all industrial fields that require vehicle weighing such as waste management, carriers, gas and chemical industries, logistics, etc.



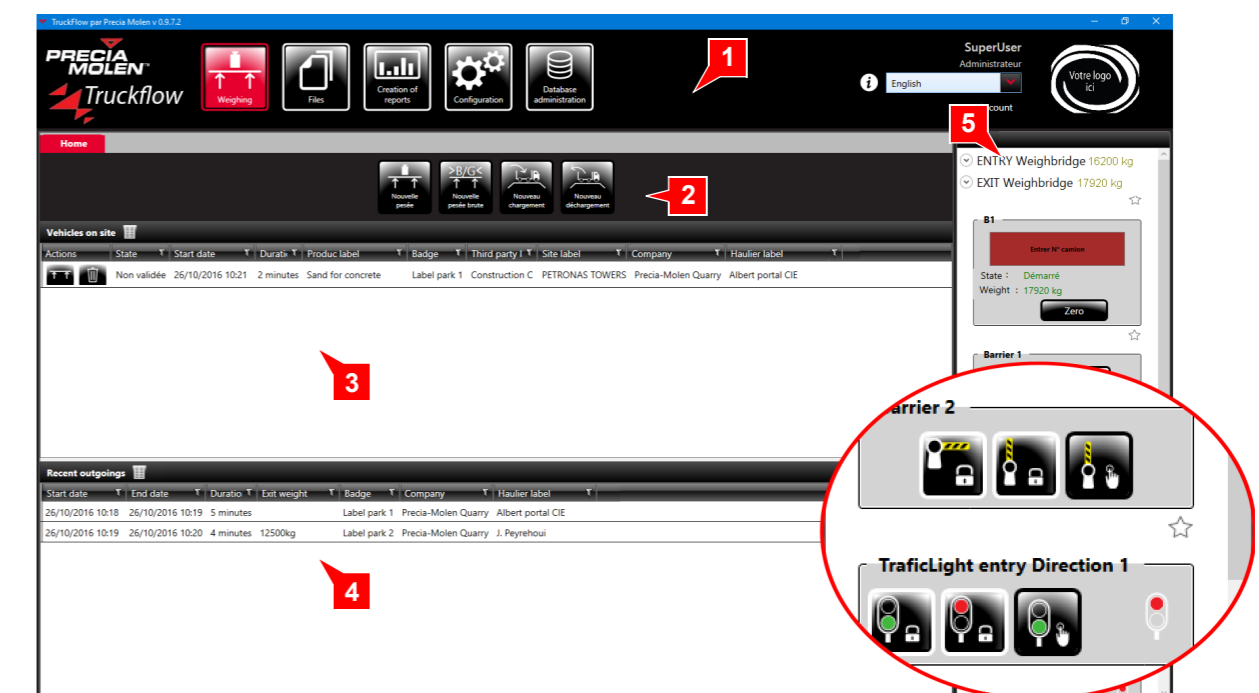
## Implementing TRUCKFLOW

TRUCKFLOW is available from our application server in free access during 15 days.

An unlock key will be provided during the installation of the application in accordance with your PC code and order reference.



## Home page



1. Application menus
2. Sub-menus and data display according to the selected menu
3. Vehicles on site
4. Vehicles recently out of site
5. Display of zones and associated peripherals

WWW.PRECIAMOLEN.COM

09-15-01-1 FT - 12/2016

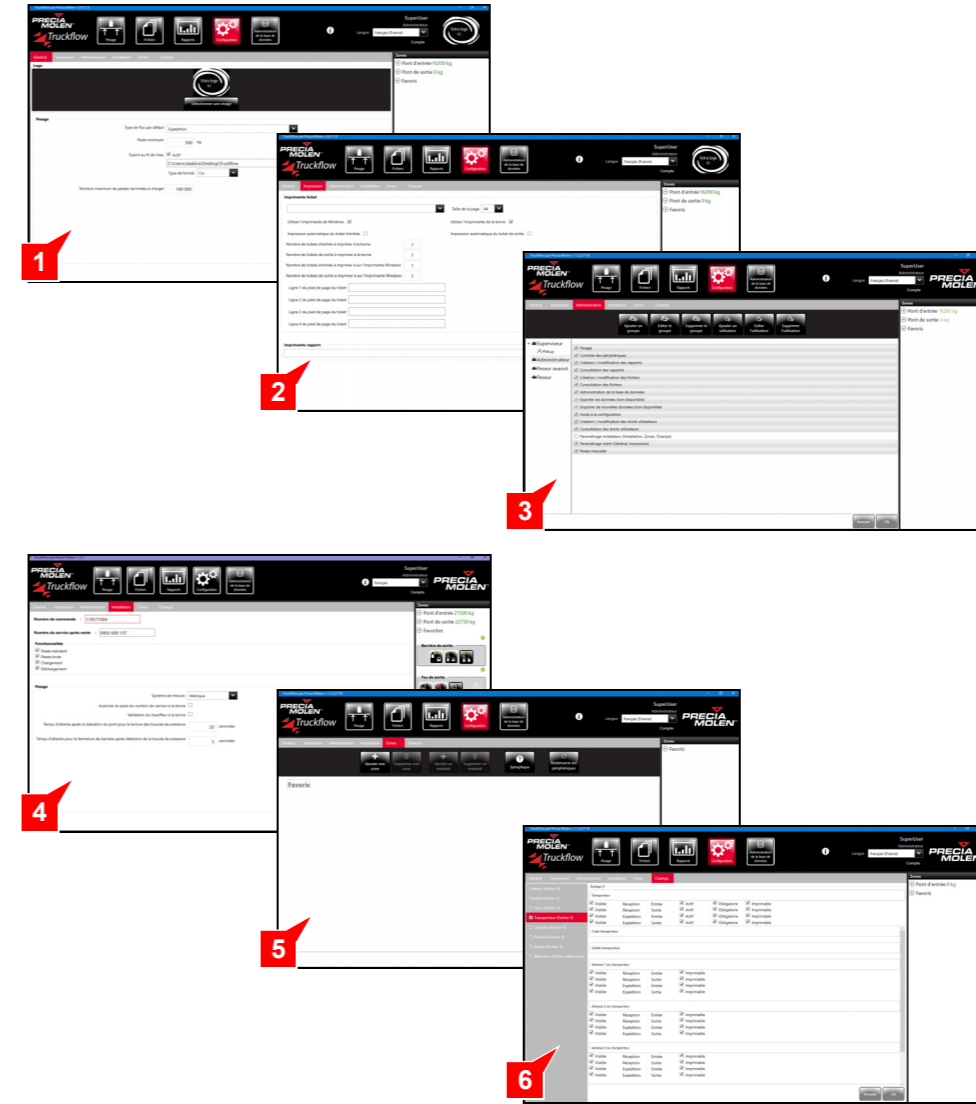
## The power of TRUCKFLOW

- Multi-operator software with user preference storage.
- Multilingual software, selection of the language at every user's connection or during use.
- Access rights with various functions according to the level connection configured by your site administrator, e.g. (non exhaustive): weighing operator, advanced weighing operator, administrator, supervisor.
- Simple weighing, dual weighing, tared weighing, load weighing, unload weighing, weighing for national police force uses.
- When weighing, all information can be entered on any of the site stations (multi-station application).
- The information to enter depends on the type of activity (reception/sending) and the type of weighing (input/output) according to the site administrator's configuration that is freely modifiable
- Weight coherence check prior to the validation of the weigh.
- Selection of weighbridge for weight entry according to its typology (input or output) and vehicle presence on weighbridge function.
- Manual weighing is possible if chosen by the administrator.
- The database can be used on various sites (multi-site) for global material flow consolidation.
- Database administration (export, import, monthly or yearly back-up, etc.).
- Permanent weight value view for all the site's weighbridges..
- Instant view of all vehicles transiting on the site with presence times.
- Possibility to manage inputs and outputs in parallel on various weighbridges but also to prepare a weigh by pre-entering the details of upcoming vehicles.
- Peripheral display window (traffic lights, barriers) that can be deported on a second screen.
- Manual peripheral action (barrier opening, traffic light turning green) by mere clicking.
- Up to 7 files dedicated to your business activity (company, truck, carrier, third party, product, work site, misc) and 4 free reference fields. Each file field can be determined as optional or compulsory at entry, as well as printable or not on the weigh ticket.
- The ticket can be printed in single copy or in multiple copies both on the printer connected to the PC but also on the terminal printer near the weighbridge.
- Each transaction is stored in the database and immediately exportable into a CSV or JSON file for instant use by your accounts department.
- Date to date report edition with 1 to 3 level criteria including totalling, average, number of transactions, exportable in CSV or Excel formats.
- TRUCKFLOW caters for a wide array of peripherals. It can monitor weight indicators, terminals, traffic lights, access barriers, radioactivity detector, photo cameras for number-plates.
- You can customise your screen by choosing your presentation logo.

## Weighing

- Entry of weighing data (Truck, Carrier, Product, etc.)
- Weight display and capture

## Application settings



- General settings
- Printing settings
- Administration settings: group and user management
- Weigh settings
- Zone settings: peripheral management
- Field settings: file management

## Example of installation with peripherals

