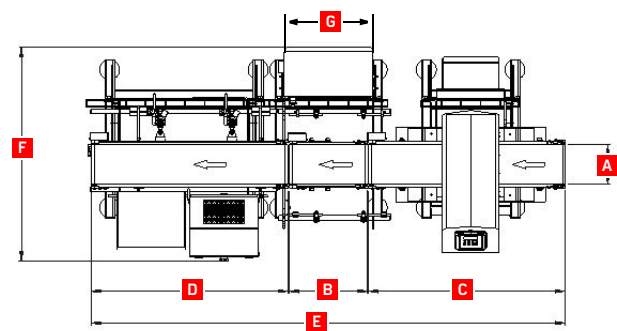


Technical characteristics

Dimensions



Model (mm)	Without metal detector			With metal detector			F (mm)	G (mm)
	A (mm)	B (mm)	C (mm)	D (mm)	E (mm)	C (mm)		
200 x 300	200	300	300	700	1310	1000	1000	2310
200 x 400	200	400	400	700	1510	1000	1000	2410
300 x 400	300	400	400	800	1610	1000	1250	2660
300 x 500	300	500	500	800	1810	1000	1250	2760
400 x 500	400	500	500	1000	2010	1000	1500	3010
400 x 600	400	600	600	1000	2210	1000	1500	3110

- Conveyor height: adjustable from 730 to 1 090 mm in 60 mm increments with fine adjustment of ± 40 mm.
- Total height: 1 730 mm ± 50 mm.

Environmental characteristics

- Electric
  - Tension ..... Single-phase 230 V
  - Frequency ..... 50 Hz
  - Maximum consumption..... 2 kW
- Pneumatic
  - Required pressure ..... 8 bar
  - Flow rate..... 150 l / mn
- Use temperature
  - Minimum ..... 0°C / 5 °C\*
  - Maximum ..... 40 °C

Mechanical construction

- Entirely build in 304 stainless steel.
- Food elastic bands
- Fast expansion system that allows for easy cleaning and belt replacement
- Brushless motors
- Front Ø 30 mm and rear Ø 25 mm drums\*\*
- Product detection and weight taking cell
- Ejection device for non compliant products by air jet, flipper or push button

Control unit

- 17" touch screen
- Intel ATOM 1.6 GHz processor
- SSD 16 Go static disk
- Windows XP Embedded operating system

\* In trade use.  
\*\* Balanced on weighing conveyor in trade use.

Electrical cabinet

- 304 IP65 stainless steel housing
- Main switch
- Low voltage indicator
- Emergency off button
- Conveyor forced march switch
- I 410 digital weighing indicator
- USB connection on waterproof connector
- TOR 48 V DC/100 mA output (upstream line control)
- TOR 8-30 V DC/7.5 kΩ input (downstream line control)

Options

Detection of metal particles

- CEIA THS-21 series metal detector integrated into the upstream conveyor. IP65 waterproof stainless steel housing.
- Mono-frequency, 3 frequencies or multi-frequency depending on the product to analyse.
  - Self-learning function to quickly add a product.
  - Automatic recall of stored parameters according to product chosen on the checkweigher console.
  - Allows for the inspection of dry or damp products.
  - Delivered with 3 test shims (ferrous, non ferrous and stainless steel).
  - Additional ejector included in the upstream conveyor combined with a stainless steel box for receipt of products with closing key.
  - Useful loop height: 140 mm

Control of upstream filler

- Allows for controlling the upstream filler by the checkweigher.
- Freeing of a 4-20 mA analogue output.
  - Image signal of the difference between the nominal weight and the sliding average.

CKW 710 Back Office software

- Software application that can be installed on any corporate Windows PC to allow for the centralised management of the various checkweighers in production.
- Traceability database common to all machines that can be installed on a server.
  - Creation/modification of product sheets that can be associated to one checkweigher or all checkweighers.
  - Start of production batches.
  - Generation of statistics per product/batch number for one production line or all production lines.
  - Real-time supervision of a checkweigher.

Data can be transferred between the checkweighers and the database via USB stick or the company's Ethernet network if machines are connected.

Other options

- 2-colour Red/Green LED light column.
- Additional conveyor to separate products upstream.
- Reception trays for non compliant products.
- Weighing conveyor cover.
- Remote maintenance.

CKW 710  
Checkweigher



Area of application

The checkweighers in the CKW 710 range combine ruggedness and reliability and accommodate the specific needs of each business sector.

They meet all current demands for dynamic accurate weighing at high speed in all business sectors, especially in the agri-food industry because they allow the regulatory control of pre-packaged products.

The interface ergonomics allows for maximum flexibility and ease of use.

Compact, the CKW 710 checkweigher can be easily integrated into any production line. Cleaning and maintenance are easy and, being totally built in stainless steel, it complies with all hygiene requirements in force.

Besides the addition of a metal particle detector, the CKW 710 range has many options to meet the needs of your applications.

Conformity

- Compliant with European Directive relative to Electro-magnetic Compatibility.
- Compliant with European Directive relative to Low Voltage equipments.
- Compliant with European Directive relative to Machines.

Metrological approval

- Compliant with MID European Directive relative to Automatic Weighing Instruments (AWI).
- Certification class XIII(1) and Y(a).

Standard range

Weighing belts

Width* (mm)	Length* (mm)				Max capacity. (kg)
	300	400	500	600	
200	●	●	×	×	3
300	×	●	●	×	6
400	×	×	●	●	6

\* Other sizes on request.

Metrological characteristics

- Max capacity. .... 3 kg to 6 kg
- Number of internal divisions ..... 30 000
- Number of divisions in Trade Use ..... 3 000

Performance

- Maximum belt speed ..... 90 m/mn
- Maximum pace ..... 180 products/mn

● - Available    × - Not available  
Note: The list of the various applicable European Directives as well as the list of countries with an accreditation can be found in our International Product Guide ref. 99-02-01-1 FT.

Your specialist

Illustrations not contractual. Precia-Molen reserves the right to alter the characteristics of the equipment described in this brochure at any time..

**PRECIA-MOLEN Headquarters & Factory**  
BP 106 - 07000 Privas - France  
Tel. 33 (0) 475 664 600  
Fax 33 (0) 475 664 330  
E-MAIL webmaster@preciamolen.com

RCS: 386 620 165 RCS Aubenas



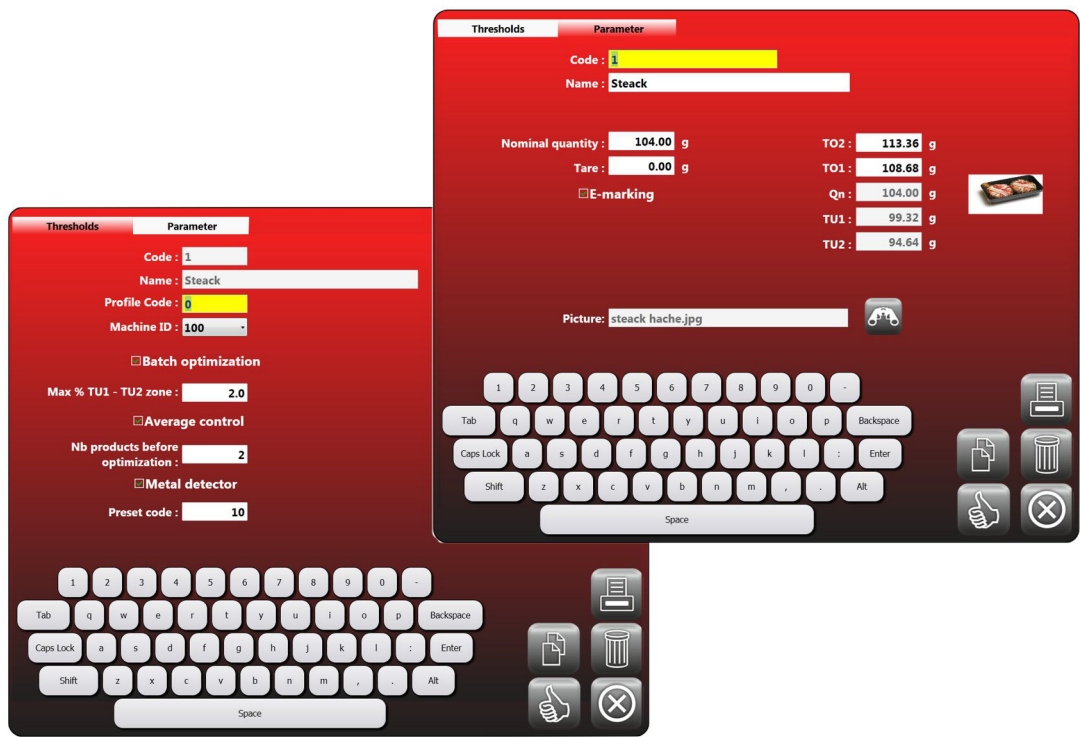
Features

Dashboard



1. Product information:
  - nominal quantity,
  - tare,
  - code,
  - name,
  - product photo.
2. Net weight of the last product weighed.
3. Average weight of in progress batch.
4. Graphic representation of the batch average value evolution.
5. Production line pace.
6. Statistics - Number of products:
  - accepted,
  - ejected because out of conform weight,
  - ejected because of metal particles detected.
7. Classification: distribution in number of weighed products in 6 weight zones.
8. Identification of batch.

Product management



- Unlimited number of products.
- 4 weight thresholds, TU2, TU1, TO1 and TO2, to define 6 weight zones.
- Automatic calculation of threshold values in compliance with the legislation applying to pre-packaged products.
- Association of a profile code to each product to recall optimal metrological parameters.
- Choice of batch optimisation: average control and/or TU1/TU2 number of products.
- Pre-set code for the automatic recall of the Metal Particle Detector\* parameters.

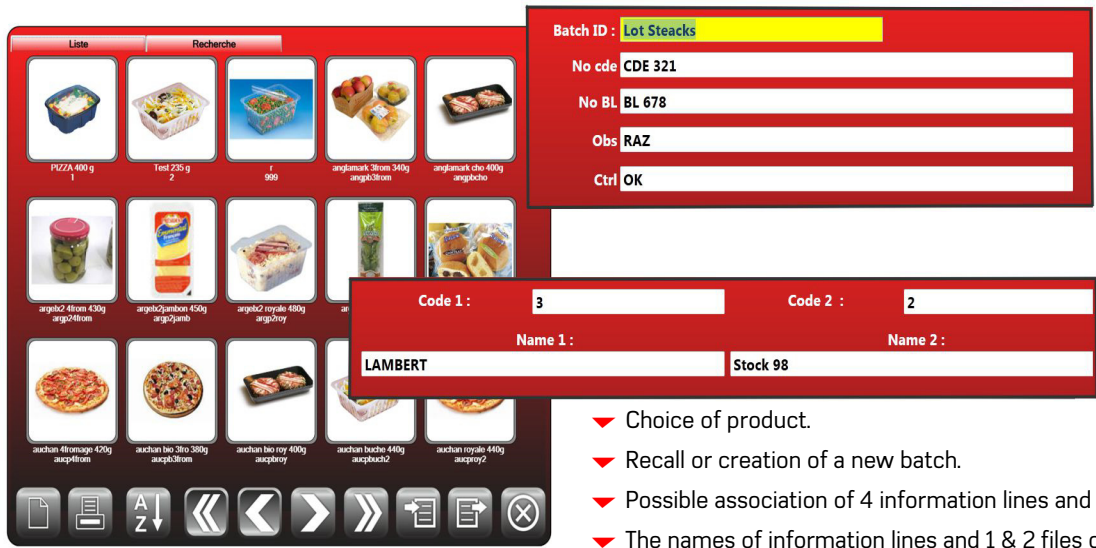
\* Option.

Batch optimization

Guarantee that all non ejected products make up a batch that complies with pre-packaged legislation:

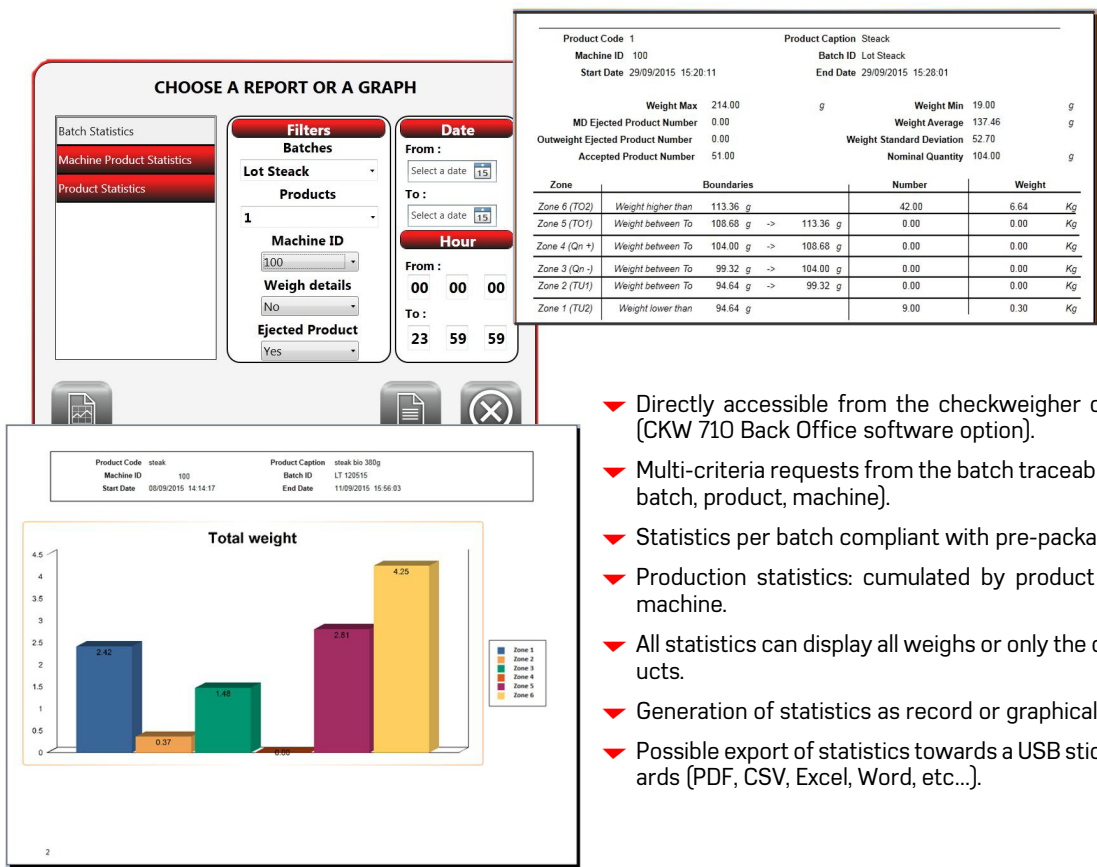
- real-time control of batch average so that it is always above the nominal product quantity,
- supervision of the maximum number of authorised products between the TU1 and TU2 thresholds.

Launching a production batch



- Choice of product.
- Recall or creation of a new batch.
- Possible association of 4 information lines and 2 stored names.
- The names of information lines and 1 & 2 files can be configured.

Statistics



- Directly accessible from the checkweigher or the company's PC (CKW 710 Back Office software option).
- Multi-criteria requests from the batch traceability database (period, batch, product, machine).
- Statistics per batch compliant with pre-packaged legislation.
- Production statistics: cumulated by product or per product and machine.
- All statistics can display all weighs or only the ones of ejected products.
- Generation of statistics as record or graphical representation.
- Possible export of statistics towards a USB stick with various standards (PDF, CSV, Excel, Word, etc...).